

CathCAD® Installation Guide

Copyright© by Roth Technologies, LLC -- All rights reserved

Licensed subscribers of the CathCAD® Software are allowed to make copies of this manual (as required) for the User's of the CathCAD® Software. Otherwise, no parts of this work may be reproduced without the written permission of Roth Technologies, LLC.

Products that are referred to in this document may be either trademarks and/or registered trademarks of the respective owners. The publisher and the author make no claim to these trademarks.

While every precaution has been taken in the preparation of these documents, the publisher and the author assume no responsibility for errors or omissions, or for damages resulting from the use of information contained in this document or from the use of programs and source code that may accompany it. In no event shall the publisher and the author be liable for any loss of profit or any other commercial damage caused or alleged to have been caused directly or indirectly by this document.

CONTACT INFORMATION

Roth Technologies, LLC
14111 Bluff Grove Drive
San Antonio, TX 78216
Phone: 210-380-9890

Email: sales@cathcad.com
Web: www.cathcad.com

TABLE OF CONTENTS

Table of Contents

- I. Introduction 4
- II. CathCAD® System Requirements 4
- III. Install the MySQL ODBC Driver..... 5
- IV. Program Installation 9
- V. Uninstalling the Program 11
- VI. Installation Support 11
- VII. How to determine if Port 3306 is open on your Network..... 12

I. Introduction

Welcome to the **CathCAD®** Software Installation Guide. This manual will provide you basic instructions on how to install the CathCAD® Software system. This document assumes that the CathCAD® Software will be loaded on a Windows XP, 7, 8, or 10 platform.

This installation guide applies to CathCAD® Standard, CathCAD® Advanced, and ML CathCAD®. For the purpose of this document, these software variants are referred to as simply CathCAD®.

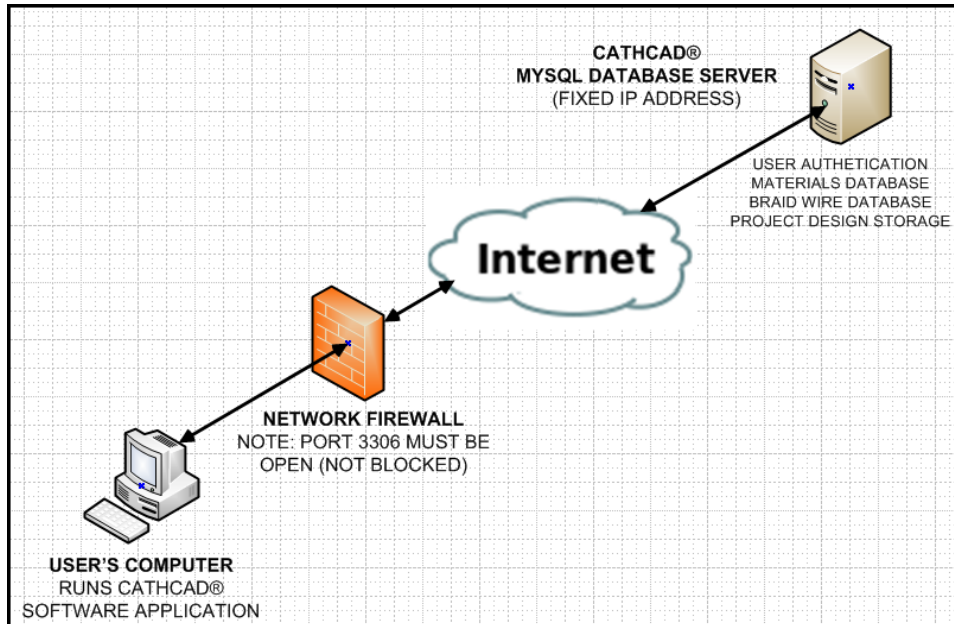
II. CathCAD® System Requirements

If you want to run CathCAD® on your Personal Computer on a Windows 7, 8, or 10 environment, the following summarizes the basic computer requirements:

- 1 GHz or faster 32 bit (x86) or 64 bit (x64) Microprocessor
- 1 GB RAM (32 bit) or 2 GB RAM (64 bit)
- The program and device drivers physically require less than 10 MB of Hard drive space. That being said -- normal running of the Windows 7/8/10 Operating System requires 1 GB minimum Hard drive space available (32 bit and 64 bit)
- Internet Access including the requirement that **Port 3306** be open on the Internet gateway
- Installation of the MySQL ODBC Driver Version 5.X 32 Bit Version
- The User running the software must have READ/WRITE access to the directory that the CathCAD® software is installed. The software creates (and deletes them when the program is exited) temp files
- In order to utilize the software's export utility, the User must have Excel 2003 or later installed. There is no special installation of the CathCAD® software to have this functionality enabled. If Excel is not on the system when the EXPORT function is attempted -- the software will gracefully recover and disable the function.

III. Install the MySQL ODBC Driver

The ODBC Driver works as a standard gateway for applications to communicate with our MySQL Database Server. The Databases for CathCAD® are located on a MySQL server connected to the Internet. This section provides the necessary instructions for installing the ODBC Driver. This driver only needs to be installed ONE TIME per computer.



Obtaining the ODBC Driver

If you are running Windows 7/8/10 – you must install MySQL ODBC Connector, 32 bit version, **not the 64 bit version**. This is true EVEN if you are running the 64 bit version of the Windows 7/8 operating systems. CathCAD® was compiled using a 32 bit compiler so the use of the 32 bit MySQL ODBC driver is mandatory.

The ODBC driver is available from the CathCAD® USB Flashdrive provided with your order. This driver may be obtained from our website as well:

https://www.cathcad.com/wp-content/uploads/2013/09/MySQL_ODBC_Install2.zip

We recommend the use of the driver that we provide as it is a known entity. Our system will automatically default to this driver if it is unable to determine from your computer's registry entries and ODBCINST.INI file located in c:\windows on your computer.

Installing the ODBC Connector for MySQL

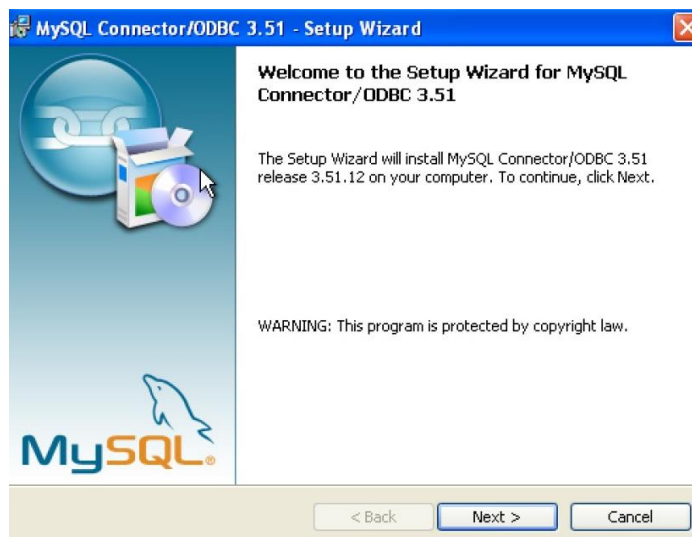
The easiest way to install the MySQL ODBC Drivers on Windows is to use the MSI package. This procedure for downloading and installing is as follows:

1. Download the applicable driver using the links provided in this document
 - a. Select Microsoft Windows as the platform
 - b. Select Windows(x86, 32-bit) as the MSI Installer Connection-
2. Click Download
3. Click “No thanks, just take me to the downloads!” when the MySQL website ask you to register an account

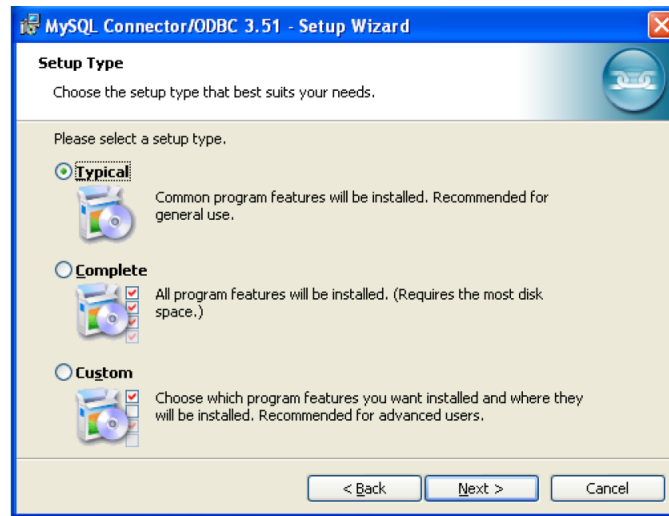
Installing the Windows Connector/ODBC Driver

The following summarizes the actual installation of the ODBC driver onto your computer. Please note that you will require Administration privileges to complete this setup. For the purposes of this procedure, the screen shots show the ODBC 3.51 driver being installed. Installing the ODBC 5.1 driver for Windows 7/8/10 is exactly the same.

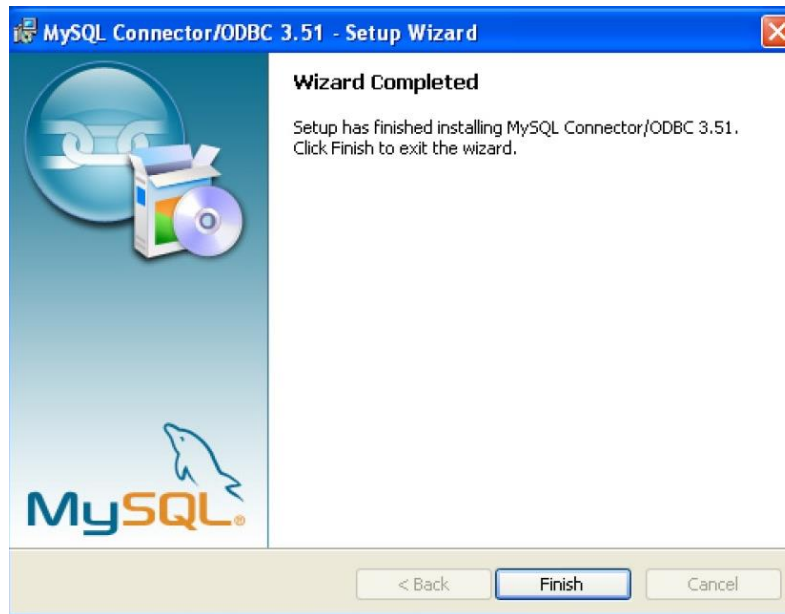
- a. Double click the standalone installer/MSI file you downloaded
- b. The MySQL Connector/ODBC Setup Wizard starts. Click the **NEXT** button to begin the installation process



- c. Choose the **Typical Installation** type. The Typical Installation provides the standard files needed to connect to a MySQL database. Click **NEXT** to proceed to the next step.

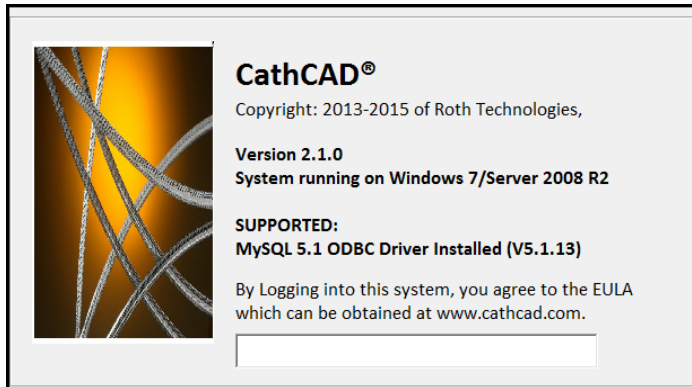


- d. Once the files have been copied to your machine, the installation is complete. Click **FINISH** to exit the installer.



Installation Results

You can determine if your installation of the MySQL ODBC driver was successful when you actually run the CathCAD® software. The driver version and the support for the MySQL ODBC driver is displayed on the login screen as shown.



Trouble Shooting

Based on previous customer installation issues, three problems have been encountered:

- The MySQL ODBC driver (32 bit version) was not installed.
- The software requires that PORT 3306 is open on your gateway. If you run into this issue, please contact your I/S department to review and correct this issue. See Section VII.

We provide instructions in Section VII that can be followed in order to determine if Port 3306 is open to our Server on your network.

IV. Program Installation

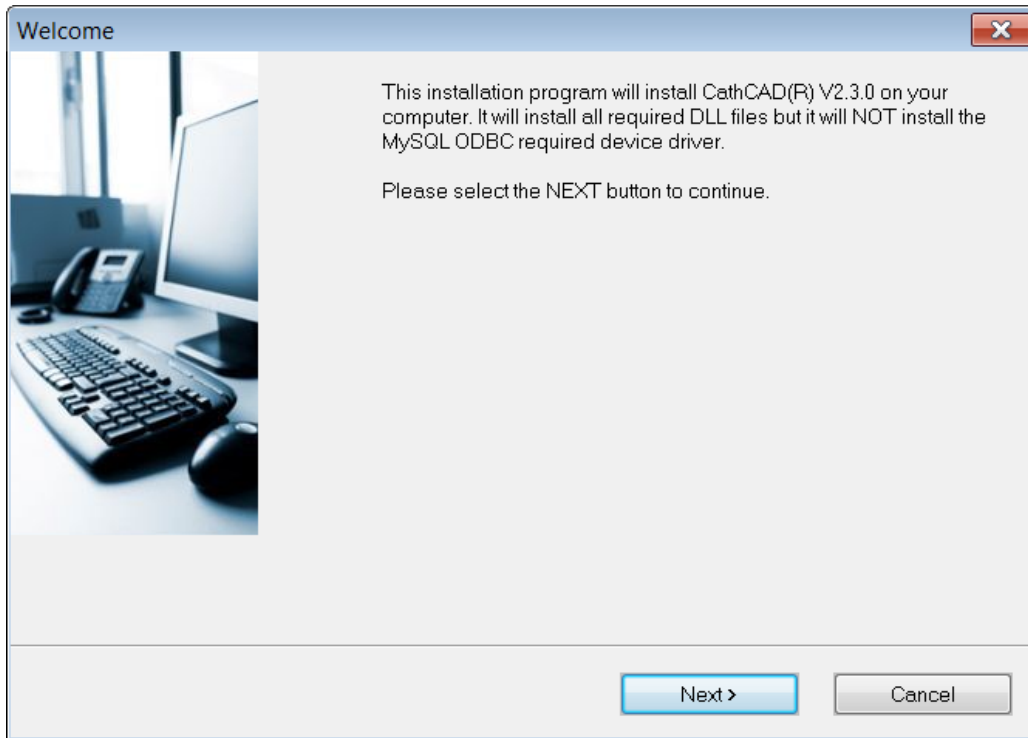
An installation program is provided to install the SOFTWARE. This installation program installs the CathCAD® program as well as installs any missing DLL files as part of your Windows Operating System. We expect that in the future the installation program will be able to install the MySQL ODBC driver as well. If you are installing an update to the program -- follow this procedure as well as the INSTALLER will automatically update the program on your computer.

1. Install the USB flash drive that was provided with your order. If the setup program was downloaded from our website, unzip the files to a local (temp) folder
2. Run the setup program. We utilize Visual Installer 2015 as sold by Sam Logic. A confirmation screen will request that you select OK to proceed (not shown on this installation guide).

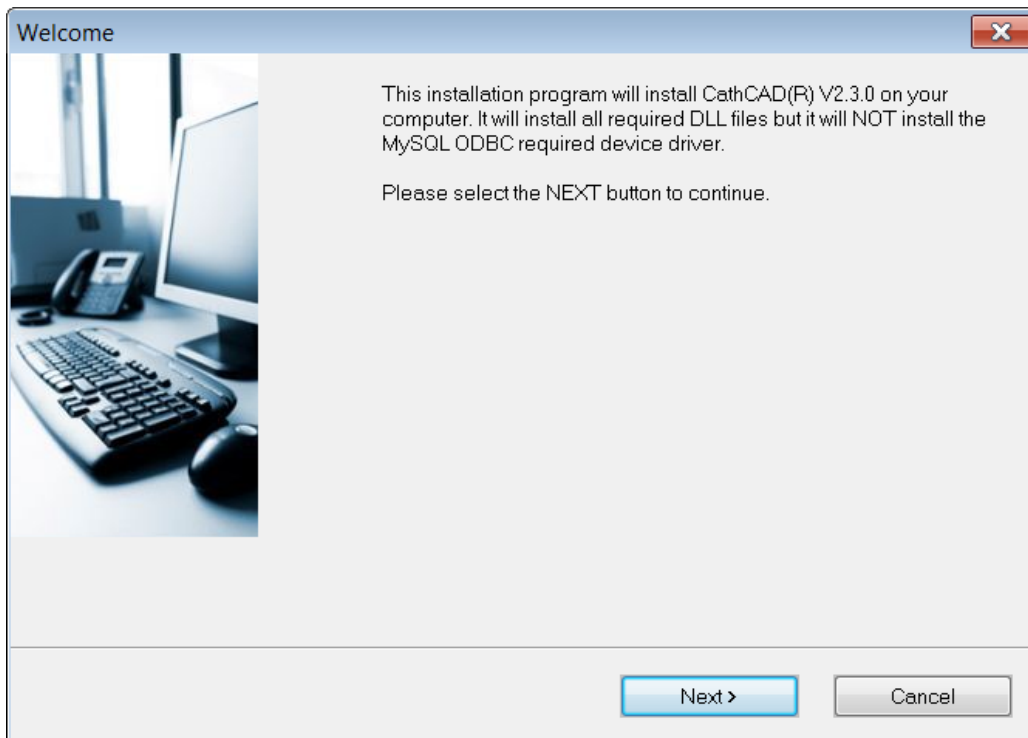
Note: You must run the installation procedure for each of the three CathCAD® products individually. This allows you as the User to install any or all of the CathCAD® products on the computer.

Name	Date modified	Type	Size
Active Delivery	12/13/2015 6:41 PM	File	2 KB
_ad8103.adx	12/13/2015 6:41 PM	ADX File	9 KB
_ad8103.dll	12/13/2015 6:41 PM	Application extens...	77 KB
CathCAD-STDV2.3.0-setup.zip	12/13/2015 6:41 PM	WinZip File	4,846 KB
DESOBJ.DAT	12/13/2015 6:41 PM	WordPerfect X6 M...	86 KB
DUNZIP32.DLL	11/8/2006 3:17 PM	Application extens...	140 KB
ENGLISH.LNG	2/23/2015 11:58 A...	LNG File	15 KB
FILEDATA.DAT	12/13/2015 6:41 PM	WordPerfect X6 M...	4,274 KB
FILELIST.INF	12/13/2015 6:41 PM	Setup Information	2 KB
SETUP.EXE	11/3/2015 5:58 PM	Application	75 KB
SETUP.EXE.manifest	9/27/2013 12:38 PM	MANIFEST File	1 KB
VIREG32.BIN	9/14/1997 3:00 AM	BIN File	37 KB
VIS32X.BIN	11/3/2015 5:56 PM	BIN File	559 KB
VISETUP.INF	12/13/2015 6:41 PM	Setup Information	9 KB
VIXREG2.BIN	11/3/2015 6:03 PM	BIN File	55 KB
VIXUNIN.BIN	11/3/2015 6:01 PM	BIN File	231 KB
W5.man	9/27/2013 12:38 PM	MAN File	1 KB
W5U.man	9/27/2013 12:38 PM	MAN File	1 KB
W6.man	9/27/2013 12:38 PM	MAN File	1 KB
W6U.man	9/27/2013 12:39 PM	MAN File	1 KB

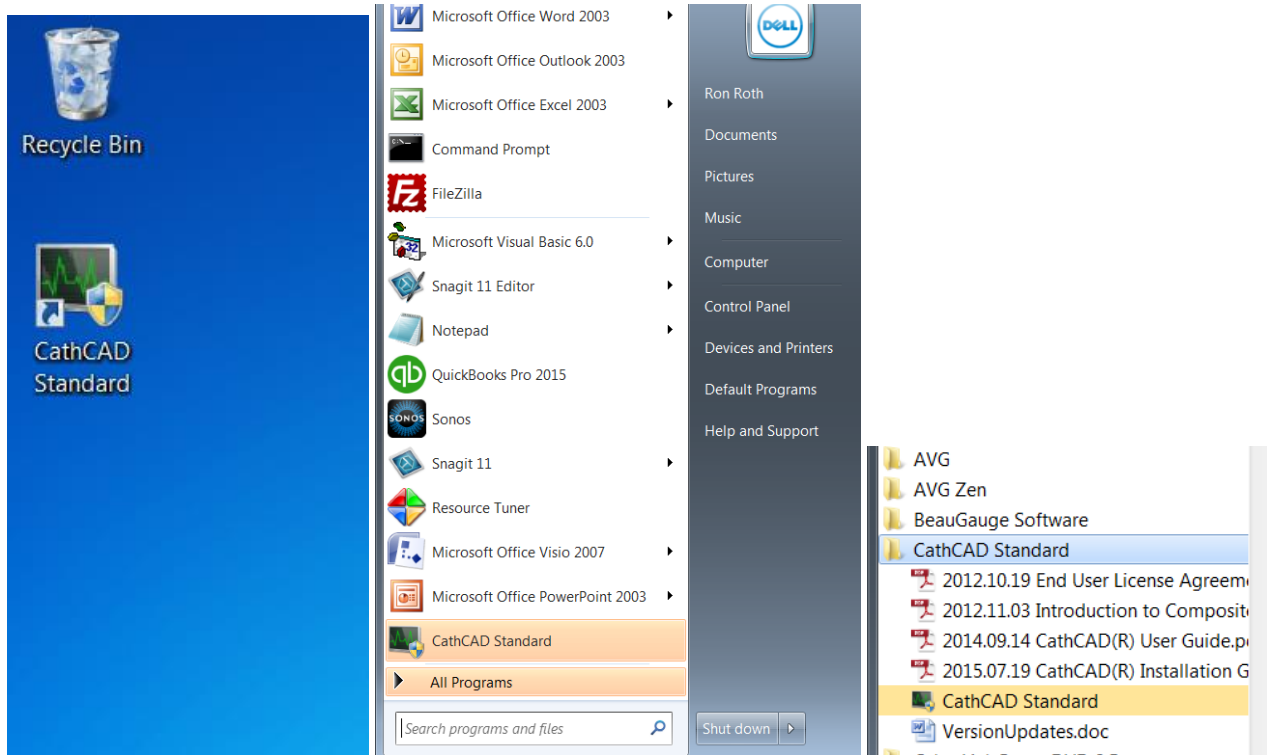
3. At the Welcome Screen, select the NEXT button as shown



4. Confirm the directory the files will be installed into by selecting NEXT



5. The installation will be completed and you are done. The CathCAD® program ICONS will be installed on your desktop (shortcut), your START menu, and in your program files as shown in the figures below.



As part of the installation we have included other associated documents that support the program's use.

V. Uninstalling the Program

The software may be uninstalled by CONTROL PANEL/PROGRAMS.

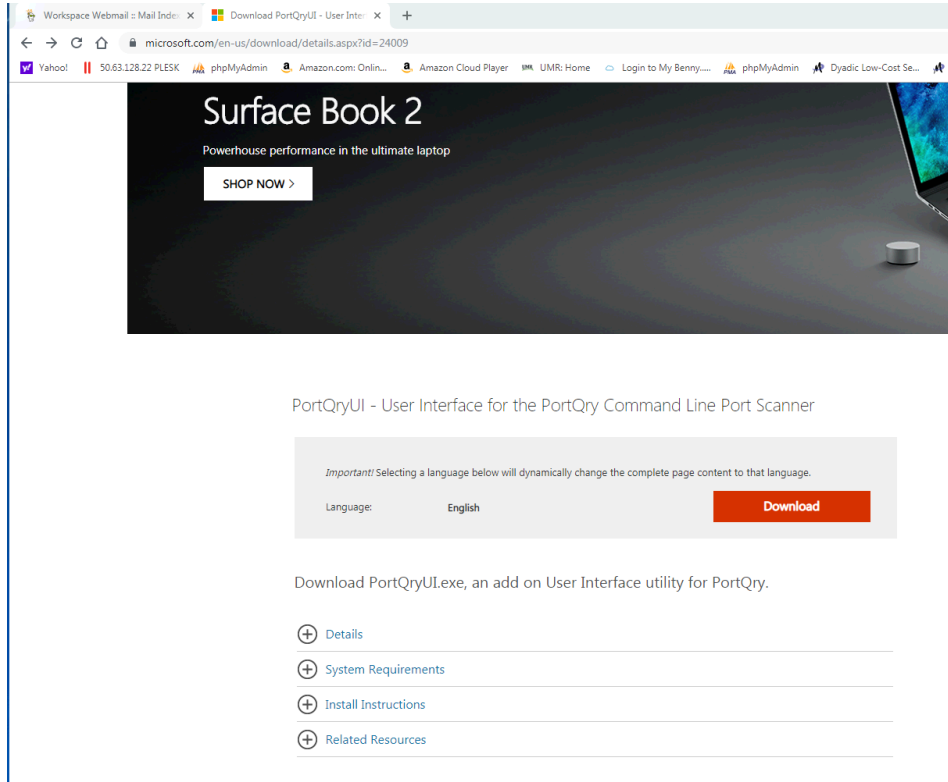
VI. Installation Support

Contact us at sales@cathcad.com

VII. How to determine if Port 3306 is open on your Network

We recommend the use of the **portqueryUI** tool that is provided by Microsoft. It may be downloaded from Microsoft via the following link. We recommend the use of the graphical user interface version. Our instructions in this document refer to this version.

<https://www.microsoft.com/en-us/download/details.aspx?id=24009>



Roth Technologies Servers

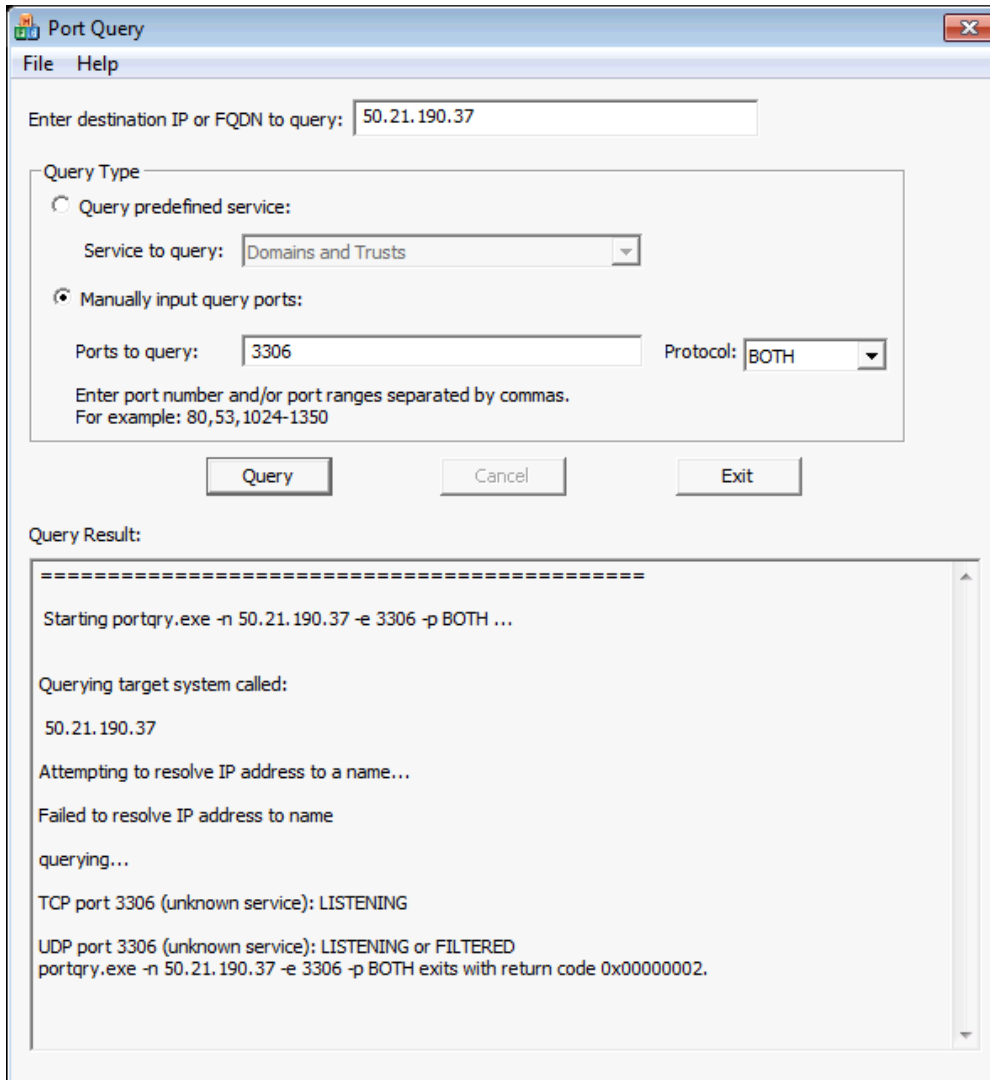
Roth Technologies has three servers that provided services as follows:

- IP: 74.208.242.136 CathCAD® Server
- IP: 74.208.165.58 MeasureOD®
- IP: 50.21.190.37 MCerberus®

We recommend opening Port 3306 to all three Servers, however, you only need to open Port 3306 to the Server for the product that you intend on using.

portqueryUI: Port 3306 open example

This screenshot illustrates an example where Port 3306/TCP Protocol is OPEN on the Firewall for IP Address 50.21.190.37



portqueryUI: Port 3306 not open example

The following example illustrates an example where Port 3306/TCP Protocol to IP Address 74.208.242.136 is NOT open on the Network Firewall.

